

Example of a formatted table

Item	Sum for Q1		Sum for Q2		Sum for Q3	
Australian lamb	↑	\$2,667.60	↑	\$4,013.10	↑	\$4,836.00
Pacific crabs	↓	\$1,768.41	↓	\$1,978.00	↑	\$4,412.32
Camembert	↑	\$3,182.40	↑	\$4,683.50	↑	\$9,579.50
Brazilian coffee	↓	\$1,398.40	↑	\$4,496.50	↓	\$1,196.00
Loisiana sauce	↓	\$1,347.36	↑	\$2,750.69	↓	\$1,375.62
Marinated pepper	↓	\$1,509.60	↓	\$530.40	↓	\$68.00
Mozzarella	↓	\$1,390.00	↑	\$4,488.20	↑	\$3,027.60
Lavash	↓	\$1,462.00	↓	\$644.00	↓	\$1,733.00
Scotch whisky	↓	\$1,310.40	↓	\$1,368.00	↓	\$1,323.00
Cherry jam	↑	\$3,202.87	↓	\$263.40	↓	\$842.88
Total		\$ 19,239.04		\$ 25,215.79		\$ 28,393.92

Example
of an autoshape
(B15:E19) and a vertical
text

↑ Above is an example of the conditional formatting: for values less than 20 000, the cell acquires ● red color; for values higher than 28 000 - ● green; if values are in this range, cells are colored in ● yellow.

Example of an equation

Current date

04/05/23

Example of a formatted table

Item	Sum for Q1		Sum for Q2		Sum for Q3	
Australian lamb	↑	\$2,667.60	↑	\$4,013.10	↑	\$4,836.00
Pacific crabs	↓	\$1,768.41	↓	\$1,978.00	↑	\$4,412.32
Camembert	↑	\$3,182.40	↑	\$4,683.50	↑	\$9,579.50
Brazilian coffee	↓	\$1,398.40	↑	\$4,496.50	↓	\$1,196.00
Loisiana sauce	↓	\$1,347.36	↑	\$2,750.69	↓	\$1,375.62
Marinated pepper	↓	\$1,509.60	↓	\$530.40	↓	\$68.00
Mozzarella	↓	\$1,390.00	↑	\$4,488.20	↑	\$3,027.60
Lavash	↓	\$1,462.00	↓	\$644.00	↓	\$1,733.00
Scotch whisky	↓	\$1,310.40	↓	\$1,368.00	↓	\$1,323.00
Cherry jam	↑	\$3,202.87	↓	\$263.40	↓	\$842.88
Total		\$ 19,239.04		\$ 25,215.79		\$ 28,393.92

Example
of an autoshape
(B15:E19) and a vertical
text

↑ Above is an example of the conditional formatting: for values less than 20 000, the cell acquires ● red color; for values higher than 28 000 - ● green; if values are in this range, cells are colored in ● yellow.

Example of an equation

Current date

04/05/23

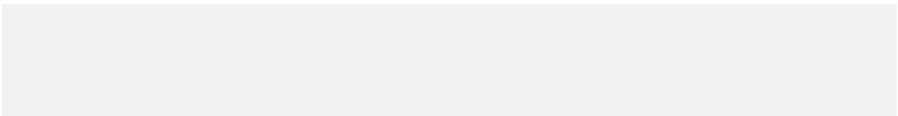


Slicer. Selecting a value hides rows in the Formatted Table

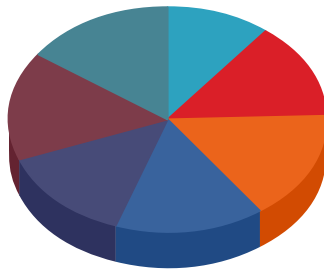


Dot-and-dash border

Cells, adjacent with the merged cell

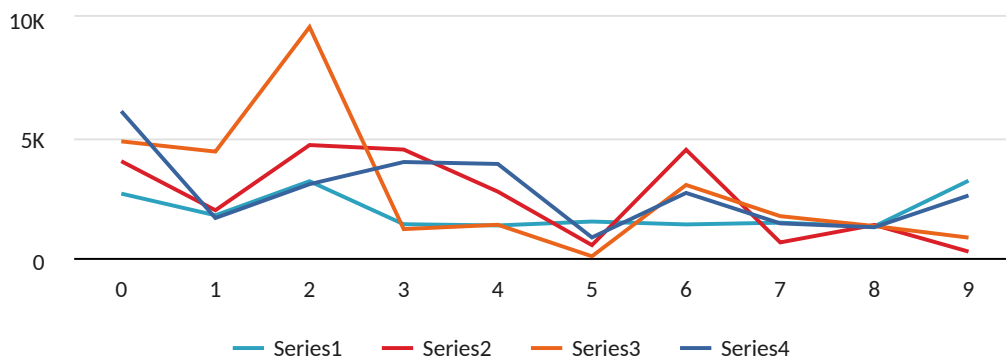


EXAMPLE OF 3D PIE CHART

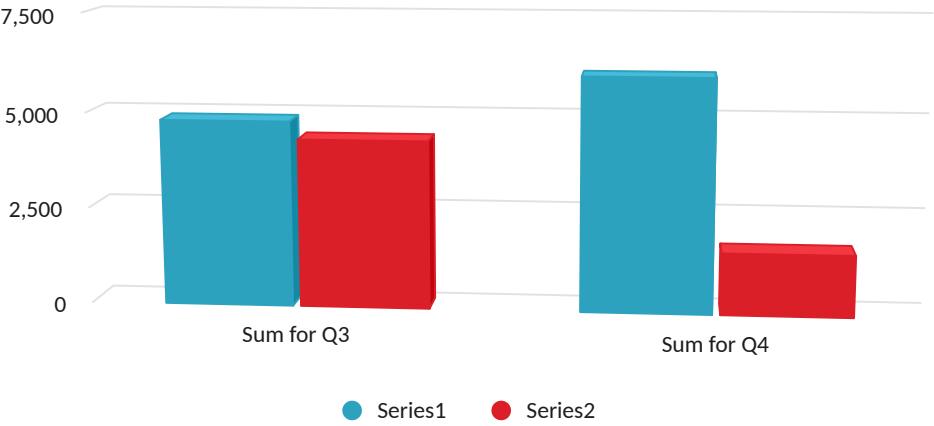


Series1 Series2 Series3 Series4 Series5 Series6 Series7

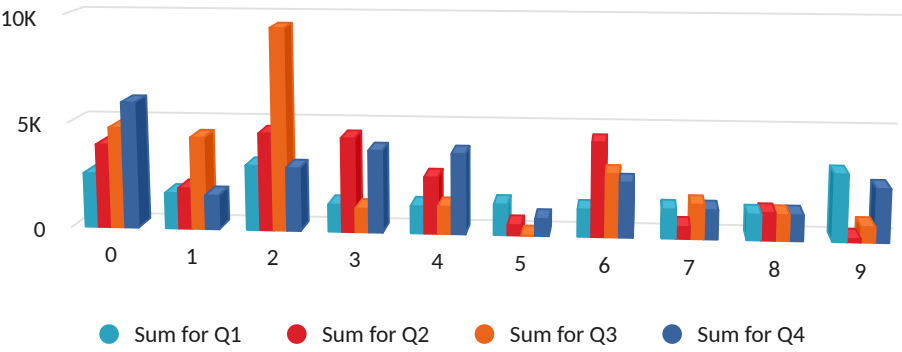
EXAMPLE OF 3D LINE CHART



EXAMPLE OF 3D PYRAMID CHART



EXAMPLE OF SURFACE CHART



Example of horizontal panes freezing (Row 1)

Pivot table example

Example of vertical panes freezing (Column A)

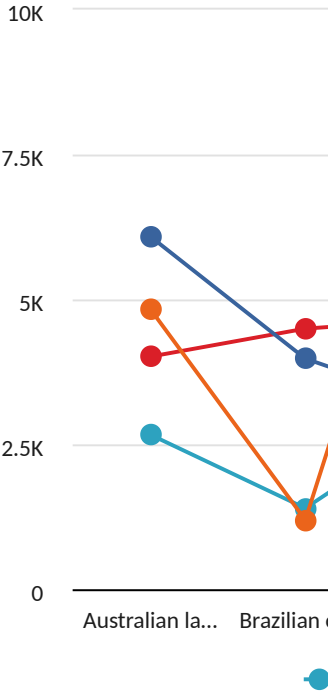
Values			
Item	SUM of Sum for Q1	SUM of Sum for Q2	
Australian lamb	\$2,667.60	\$4,013.10	
Brazilian coffee	\$1,398.40	\$4,496.50	
Camembert	\$3,182.40	\$4,683.50	
Cherry jam	\$3,202.87	\$263.40	
Lavash	\$1,462.00	\$644.00	
Loisiana sauce	\$1,347.36	\$2,750.69	
Marinated pepper	\$1,509.60	\$530.40	
Mozzarella	\$1,390.00	\$4,488.20	
Pacific crabs	\$1,768.41	\$1,978.00	
Scotch whisky	\$1,310.40	\$1,368.00	
Grand Total	\$19,239.04	\$25,215.79	

Example of vertical panes freezing (Column A)

SUM of Sum for Q3	SUM of Sum for Q4	
\$4,836.00	\$6,087.90	
\$1,196.00	\$3,979.00	
\$9,579.50	\$3,060.00	
\$842.88	\$2,590.10	
\$1,733.00	\$1,434.00	
\$1,375.62	\$3,899.51	
\$68.00	\$850.00	
\$3,027.60	\$2,697.00	
\$4,412.32	\$1,656.00	
\$1,323.00	\$1,273.50	
\$28,393.92	\$27,527.01	

A line chart with a y-axis ranging from 0 to 10K in increments of 2.5K. The x-axis has two categories: 'Australian la...' and 'Brazilian o...'. There are four data series represented by different colored lines with circular markers: blue, orange, red, and teal. The blue series starts at approximately 6.5K for 'Australian la...' and drops to about 4.5K for 'Brazilian o...'. The orange series starts at 5K for 'Australian la...' and drops to about 1.5K for 'Brazilian o...'. The red series starts at 4K for 'Australian la...' and rises slightly to about 4.5K for 'Brazilian o...'. The teal series starts at 2.5K for 'Australian la...' and drops to about 1.5K for 'Brazilian o...'.

Series	Australian la...	Brazilian o...
Blue	~6.5K	~4.5K
Orange	5K	~1.5K
Red	4K	~4.5K
Teal	2.5K	~1.5K



Example of vertical panels freezing (Column A)

[illegible]

Example
of
vertical
pane
s
freezi
ng
(Column
A)

Whisky

Data input 1

January	February	March	April	May
\$ 100.00	\$ 150.00	\$ 200.00	\$ 250.00	\$ 300.00
1%	2%	3%	4%	5%

CHOOSECOLS Formula example

January	April	July
\$ 100.00	\$ 250.00	\$ 400.00
1%	4%	7%

Data input 2

January	\$ 100.00	1%
February	\$ 150.00	2%
March	\$ 200.00	3%

Data input 3

April
May
June
July
August

DROP and VSTACK Formulas examples

September	\$ 550.00	9%
October	\$ 550.00	10%
November	\$ 600.00	11%
December	\$ 650.00	12%

Data input 5

Jack	Aaron	Tommy	Michael
Melvin	Bryce	Pamela	Jim
Helen	Ruby	Michelle	Drew

TOCOL Formula example

Jack
Aaron

WRAPCOLS Formula example

Jack Bryce
Aaron Pamela

June	July	August	September	October	November	December
\$ 350.00	\$ 400.00	\$ 500.00	\$ 550.00	\$ 550.00	\$ 600.00	\$ 650.00
6%	7%	8%	9%	10%	11%	12%

TAKE and HSTACK Formulas examples				
February	March	April	June	July
\$ 150.00	\$ 200.00	\$ 250.00	\$ 350.00	\$ 400.00
2%	3%	4%	6%	7%

\$ 250.00	4%
\$ 300.00	5%
\$ 350.00	6%
\$ 400.00	7%
\$ 500.00	8%

Data input 4		
September	\$ 550.00	9%
October	\$ 550.00	10%
November	\$ 600.00	11%
December	\$ 650.00	12%

Michelle
Drew

WRAPROWS Formula example	
Jack	Aaron
Tommy	Michael

Data input 6

If you want to live a happy life, tie it to a goal, not to people

TEXTAFTER and TEXTBEFORE Formula examples

not to people or things. (Albert Einstein)

If you want to live a happy life, tie it to a goal

TEXTSPLIT Formula example

If you want to live a happy life

tie it to a goal

not to people or things. (Albert Einstein)

#N/A!	#N/A!	
#N/A!	#N/A!	
#N/A!	#N/A!	

--	--	--

Tommy
Michael
Melvin
Bryce
Pamela
Jim
Helen
Ruby
Michelle
Drew

Tommy	Jim
Michael	Helen
Melvin	Ruby

TOROW Formula example				
Jack	Aaron	Tommy	Michael	Melvin

-	Melvin	Bryce
-	Pamela	Jim
-	Helen	Ruby
	Michelle	Drew

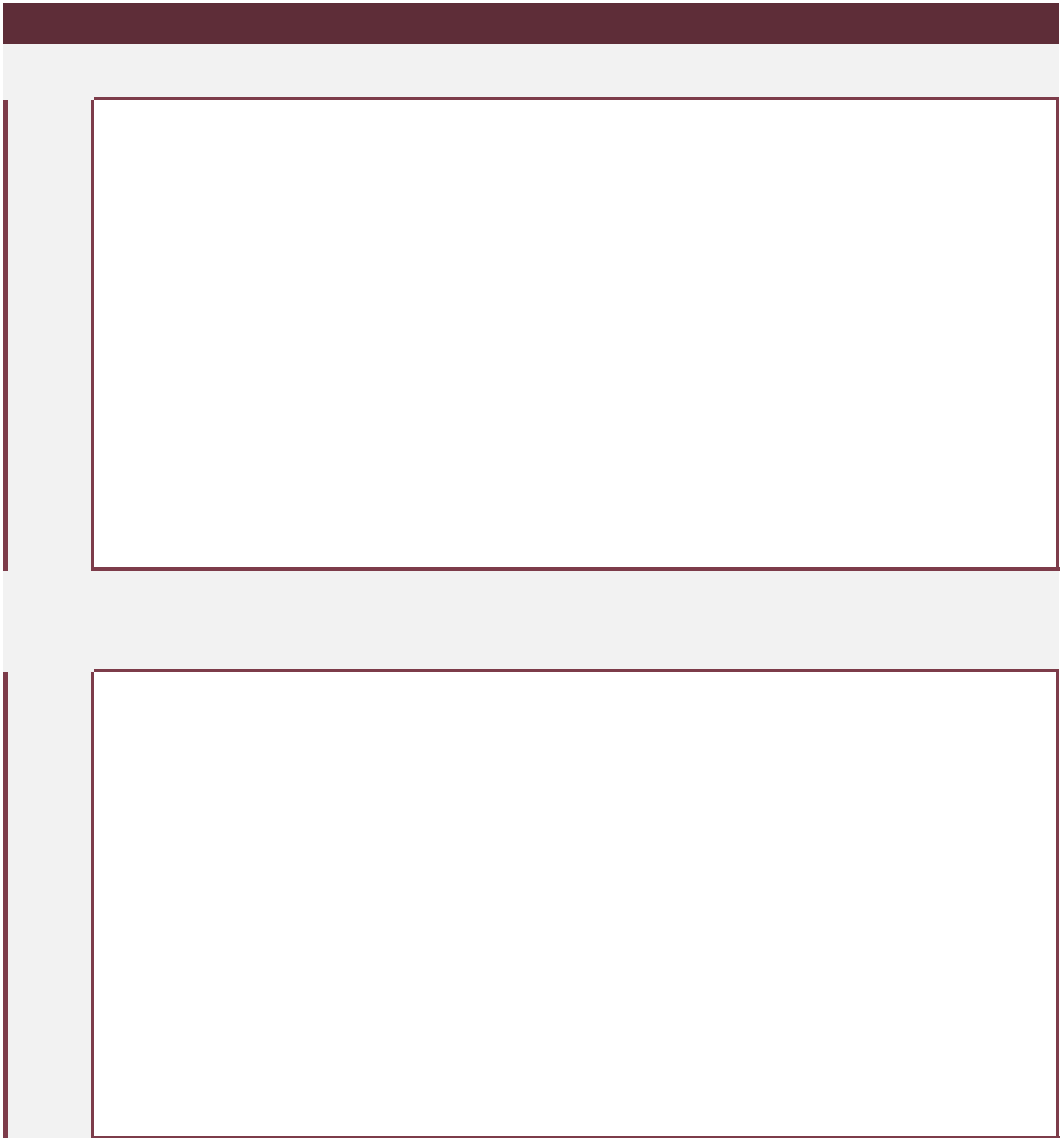
=TOCOL(A19:D21)						
Bryce	Pamela	Jim	Helen	Ruby	Michelle	Drew

1

2

Raster Image Examples





objects

.svg

